

Monthly News Letter

Boathouse 4 Volunteers

January 2022

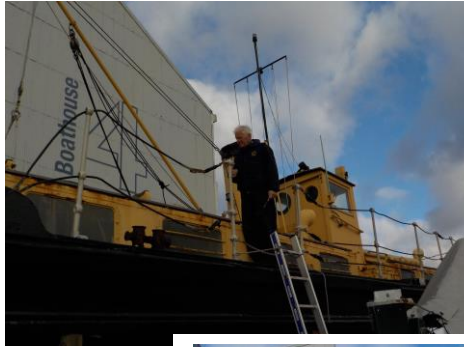


Well just what happened to January. That seems like a quick month done and dusted.

Portsmouth Naval Base Property Trust



HLD D49 maintenance Her mini weather protection programme continues with Jeremy, Linden and Pauline doing their bit to get all of her decks covered over to stem the flow of rainwater over the coming winter months. Over



left you can see Jeremy getting ready to disembark. Jeremy has borne the brunt of this month's programme and bad weather.



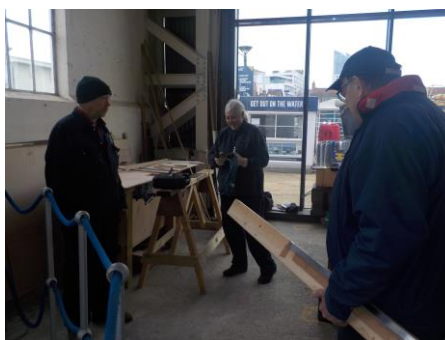
VIC 56 – The maintenance work is continuing apace with the



team keeping busy above left you can see the "Hand of Aron" as he is knocking out some replacement gaskets for various flanges and valves. Above right in his full glory and over right the roll of gasket paper they managed to locate from Henry's "Come in handy" stores. Paul has been working on various locations through the month sorting out a lot more 'Come in Handy's' with the help of the girls they have tidied up the messroom.

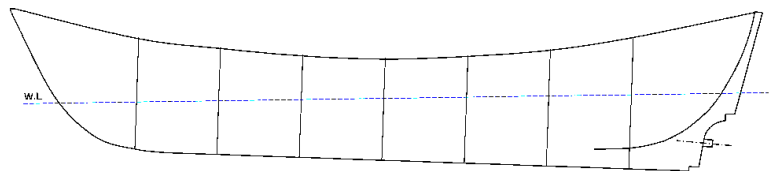
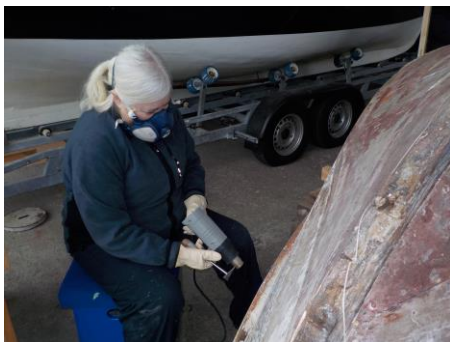


WW2 Dory Restoration Steve and co have been making some steady progress plotting



the shape of the boat and comparing the actuals to the theoretical. Between them they have invented several measuring aids / guides never before known to the boat building fraternity. Over left Mark is using this piece in anger as he takes measurements off from the keel down to various points

on the hull. Just over left Steve, Mark and Pauline are discussing the merits of various approaches, in his hand Steve is holding MK2 straight edge and measuring stick. Steve wanted it Patented ship's side grey, but Pauline from previous experiences said not to as she would end up stripping it off, and sure enough over right she is there with heat gun and paint stripper in hand. Below right is a copy of Steve's initial plot of his measurements, at present there is still some ongoing discussions about the sheer and the waterline but they will be resolved eventually.



Whalers Excellent and Westerman Again little or no change on the whaler front in the month.

CMB4 Replica build – The whole of this month has been dedicated to the planing step. In the first photo below left you can see David with Ian above checking for gapping between the hull and the bottom edge of the step pattern. Once we were all happy with the shape then it was all systems go to cut 5 off identical laminates from the master pattern. Middle photo below the guys are marking out a full sized laminate from an 8ft x 4 ft sheet of 9 mm marine ply. Below right Ian B is taking a quick photo break whilst fitting one end of a laminate to check for fit.



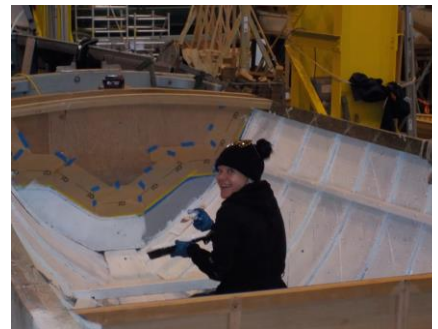
In the photo over left that is the hand of Harry using a shaped gauging batten to set up some of the internal transverse webs which will run between the internal intermediate step longitudinals.. Over left middle photo Ian P is locating one of the step patterns



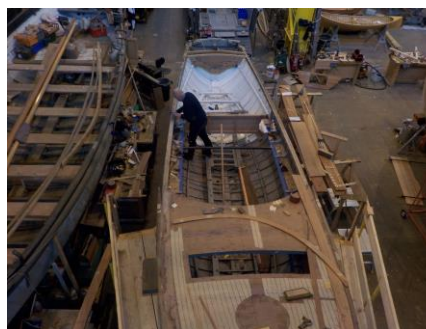
Above left and centre the 5 x 9mm laminates have been dry fitted to the hull whilst above right all have been glued together but kept isolated from the hull using release tape. In this photo we have the 3 Johns working with David making and dry fitting the transverse webs. Below left Ian B has just removed the fully glued laminated after step section so that we can finish off the internal stringers. The photo below middle shows the full hull towards the end of the month, in it you can see quite a bit of the internal structure of the step. Now is the time to see it because hopefully this time next month it will all be covered over by the external planking, hopefully never to be seen again by the human eye.



Armed Steam Cutter ASC 26 – Ollie and his team of students and volunteers have been making some nice progress with the boat. Below left Kevin F is working on some deck beams aft in the middle photos are a couple of John P and Keith's varnished gratings along with a carved closing board. Below right Emily is painting the inside of the hull and below left second row you can see Tony obviously enjoying himself. Centre photo second row shows the grating margin boards with their multiple coats of varnish along with several more gratings work in



progress, below left another couple of shots of Tony working on the gunwales. Next page far right Janet C is working on the coaming for the foredeck



Seaplane Tender ST 1502 – Following last month's work out she is now taking a short rest before coming out for a brief session of cosmetic care ready for this year's new season

LCA F8 –, This next article is courtesy of Shady Lane and was submitted by him for inclusion in this News Letter. He reports the following:-

Shady Lane has been rather busy of late, but still found to spend time with the "Grey Bitch" (a name given unfairly in my view to "Our Lady of the Falklands") getting her ready for the 2022

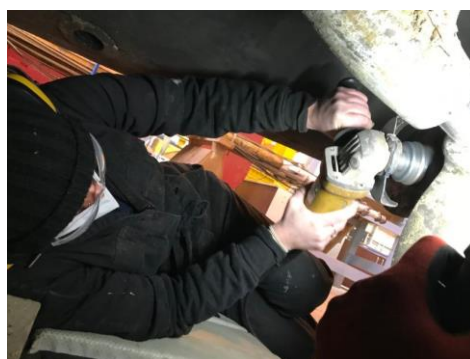


season and more importantly Falklands 40. Since she was lifted out in December Shady has been using her as his COVID recovery plan, ably assisted by guest stars Emily, seen over left, and James and Mike. This way he hopes to make sure her refit period stays on schedule.

Now thanks to the (jet) wash and set she was set down on the chocks to dry out her now perter bottom. In the meantime, Shady discovered his inner contortionist, finding himself in impossible positions in the engine room needed to remove the dried out packing on her leaky propellor

shaft. Numerous bits of string to pull hoses out of the way and the removal of certain structural items to aid access are best ignored (in case the boss is reading). The same was true in the steering compartment on one of the rudders. Once disassembled the mystery deepened and a trip to the archives revealed a missing component that will need to be manufactured, along with another revelation..... Is this a an LCVP Mk2 batch2 or is it a Mk3???????????? No doubt more of that later.

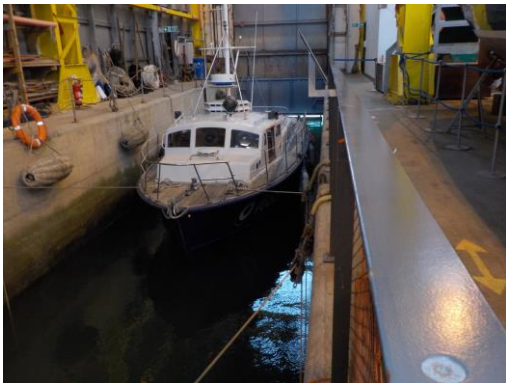
Back to the job in hand, internal jobs completed one could no longer put off the challenge of anti-fouling. Fortunately, "Slim" Shady and his team were up to the task of squeezing into the limited space to clean, key and finally apply two coats. For good measure they also polished off the marine growth accumulated during the year from the propellers and associated underwater metalwork. See photo over right All that remains to be anti-fouled are the areas obstructed by the chocks. The ramp wire was removed, inspected and cleaned ready to be reinstalled once the hinge pins grease points have been standardised



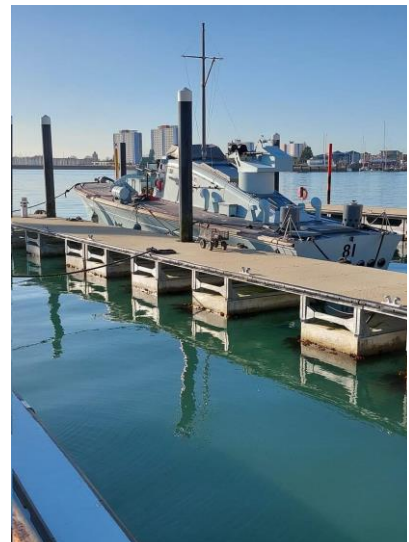
With the "wet work" (out of water phase) progress as far as can be, attention has shifted to topsides and the application her 1982 Falklands "warpaint" camouflage scheme; dramatic changes to her appearance are imminent. Watch this space for further developments.



Range Safety Launch RSL 1668 -With the recent Boathouse shuffle complete the RSL is still in the dock waiting her turn to be lifted and have work carried out on her ready for the new season back on the pontoons where hopefully she will be available as another visitor activity boat cum crew training vessel..



HSL 102 and MBG 81- Our two main power boats are keeping well and currently alongside our pontoons. If you would like to join us on a high-speed run in 102 do a 'Ctrl Click' on the link below and enjoy the ride. Make sure you click to 'remove ads'. Follow on with some of the other video clips as a bonus.



[RAF Rescue Launch - 5 to 35 knots - All Ahead Full - YouTube](#)

Suggestions for next month - If you have got any ditties, lies, scandal or photos that you would like to see in print just let me know, my 'e' mail address is: - boatbitsisus@ntlworld.com. Fred is the name